



Mandarin Oriental, Singapore

MANDARIN ORIENTAL



Location

Set in the heart of Marina Bay, Mandarin Oriental, Singapore is perfectly situated for business and leisure with easy access to the central business district and a multitude of leisure destinations.



Singapore Changi Airport
Driving Distance 20 minutes – 16 km



Sands Shopping Mall
Walking Distance 13 minutes – 900m



Art Science Museum
Walking Distance 8 minutes – 750m



Suntec Shopping Mall
Walking Distance 10 minutes – 850m



Marina Bay Financial Centre
Driving Distance 7 minutes – 1.9 km



Sentosa Island
Driving Distance 15 minutes – 8km



Orchard (ION)
Driving Distance 10 minutes – 3.2 km



Gardens By the Bay
Walking Distance 15 minutes – 1.0 km



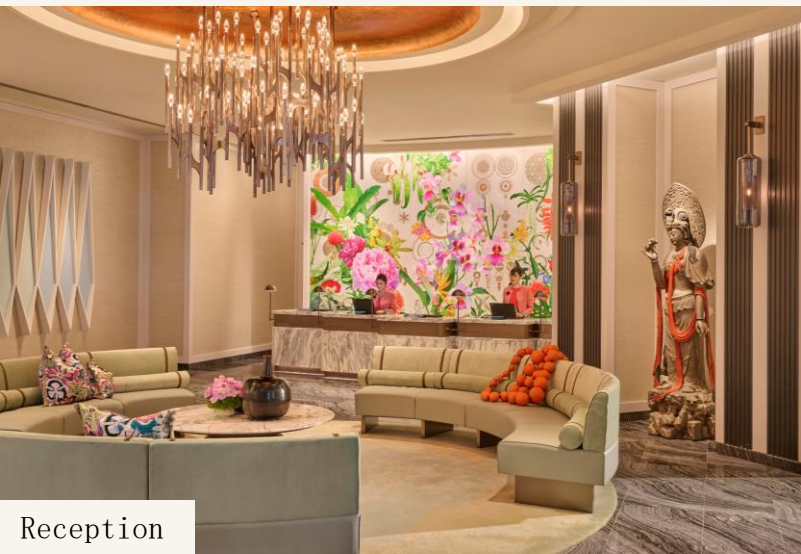
Reception



Lobby Lounge



Lobby



Reception



Lily Pond & Pavilion



Mandarin Cake Shop





MOSIN Signature Fan

Designed by celebrated Singaporean artist, Hans Tan, this unique ceramic fan is an intricate ode to Singapore's rich history and multicultural heritage, encapsulating what it means to be "Exceptionally Singapore". The delicate motifs draw inspiration from the Peranakan batik design and meld harmoniously with floral elements, a reinterpretation of the Garden City.

The hues of pink and green are drawn from Peranakan palettes, mirroring the aesthetics of our newly transformed spaces.

Our new Signature Fan is displayed at the lobby following an unveiling event on 16 May 2024 at the Royal Marina Bay Penthouse.



Deluxe Room

Associated with nature, the green colour tone inspired by our garden city will bring forth a refreshing and restful note in our Deluxe Room, crafting a space for you to relax and rejuvenate as you soak in the expansive views of the city and its surrounding verdant green landscape.

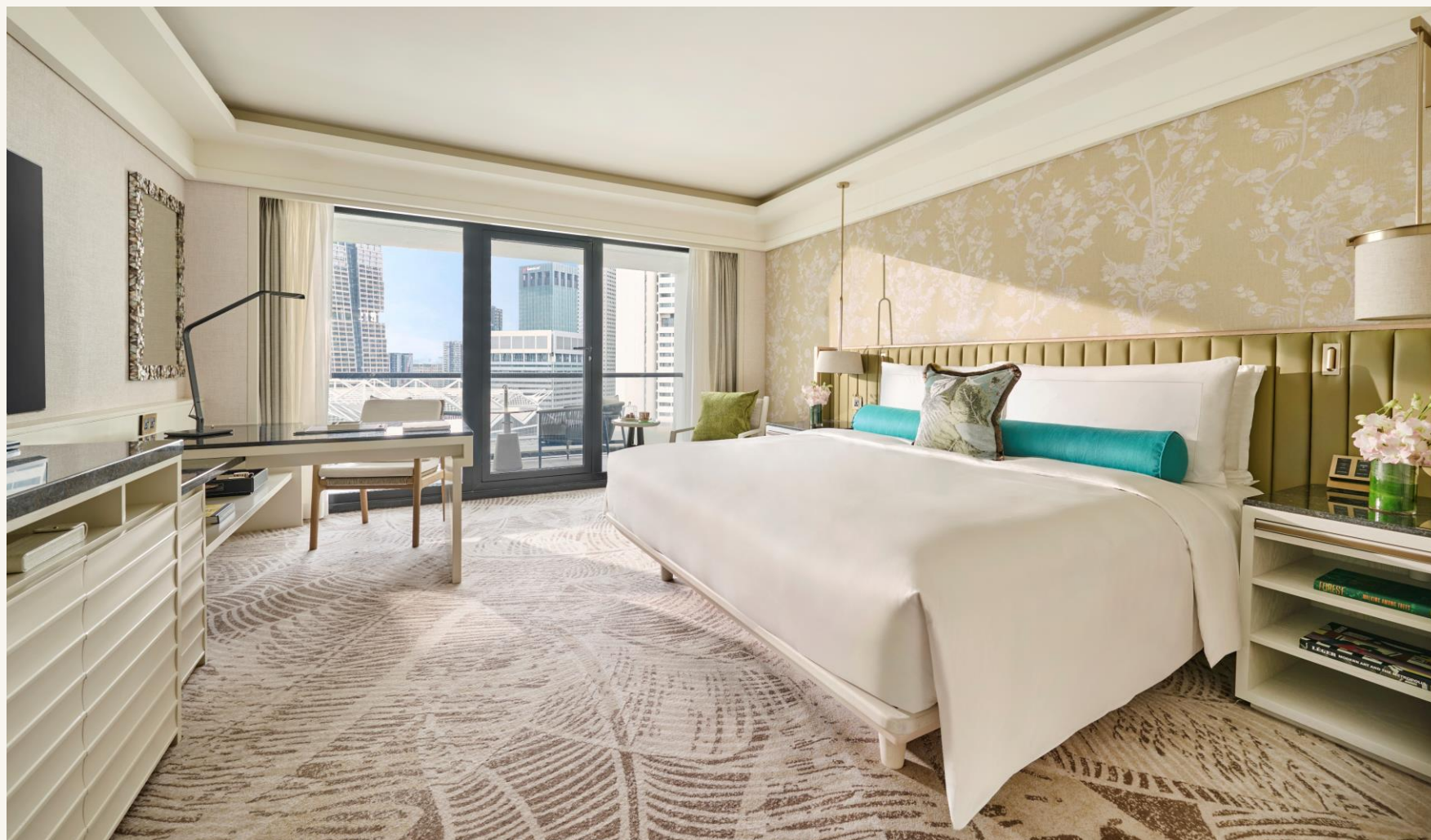
View	City View
Room Size (Sqm)	33
Max Occupants	3A or 2A + 1C
Sofa Bed	×
Rollaway Bed	✓
Balcony	×
Balcony Size (Sqm)	-
With Lounge Access	×
Connecting	✓
Connecting Room Option	<ul style="list-style-type: none">• Deluxe Room King / Twin• Deluxe Room King / King
Highlights	<ul style="list-style-type: none">• Work Desk• Bath & Rainforest Shower• Floor-To-Ceiling Windows
Amenities	<ul style="list-style-type: none">• Illy Coffee Machine• HD Smart TVs



Deluxe Room with Balcony

Floor-to-ceiling windows overlooking the city, this spacious room comes complete with a private balcony and an elegant bathroom, featuring a rain shower and luxurious bath.

View	City View
Room Size (Sqm)	45
Max Occupants	3A or 2A + 1C
Sofa Bed	×
Rollaway Bed	✓
Balcony	✓
Balcony Size (Sqm)	6.15
With Lounge Access	×
Connecting	✓
Connecting Room Option	Deluxe Room King with Balcony / Premier Room King with Balcony
Highlights	<ul style="list-style-type: none">• Private Balcony• Work Desk• Bath & Rainforest Shower• Floor-To-Ceiling Windows
Amenities	<ul style="list-style-type: none">• Illy Coffee Machine• HD Smart TVs



Premier Room with Balcony

With views spanning over the cityscape, this spacious room features two double beds and an elegant bathroom with a rain shower and luxurious bath.

View	City View
Room Size (Sqm)	56
Max Occupants	4 (3A + 1C)
Sofa Bed <i>(Supplement applicable for 13 yrs old and above)</i>	✓
Balcony	✓
Balcony Size (Sqm)	6.15
With Lounge Access	✗
Connecting	✓
Connecting Room Option	Deluxe Room King with Balcony
Highlights	<ul style="list-style-type: none">• Private Balcony• Work Desk• Bath & Rainforest Shower• Floor-To-Ceiling Windows• Sofa Bed
Amenities	<ul style="list-style-type: none">• Illy Coffee Machine• HD Smart TVs



Sea View Room

Reflecting the golden tones of sunrise, accompanied with stunning sea views through its floor-to-ceiling windows, this spacious room is furnished with custom-designed furniture and local nuances, plush carpets with tropical motifs, and an elegant bathroom equipped with a rain shower and bath.

View	Sea View
Room Size (Sqm)	33
Max Occupants	3A or 2A + 1C
Sofa Bed <i>(Supplement applicable for 12 yrs old and above)</i>	✓
Balcony	✗
Balcony Size (Sqm)	-
With Lounge Access	✗
Connecting	✓
Connecting Room Option	<ul style="list-style-type: none"> • Sea View Room King / Twin • Sea View Room King / King
Highlights	<ul style="list-style-type: none"> • Custom-Designed Furniture • Bath & Rainforest Shower • Floor-To-Ceiling Windows • Sofa Bed
Amenities	<ul style="list-style-type: none"> • Illy Coffee Machine • HD Smart TVs



Marina Bay View Room

Boasting panoramic vistas of Marina Bay and Singapore's skyline through its floor-to-ceiling windows, this beautifully appointed room features a cool blue colour palette.

View	Marina Bay View
Room Size (Sqm)	34
Max Occupants	3A or 2A + 1C
Sofa Bed <i>(Supplement applicable for 12 yrs old and above)</i>	✓
Balcony	✗
Balcony Size (Sqm)	-
With Lounge Access	✓
Connecting	✓
Connecting Room Option	<ul style="list-style-type: none">• Marina Bay View Room King / Twin• Marina Bay View Room King / King
Highlights	<ul style="list-style-type: none">• Custom-Designed Furniture• Bath & Rainforest Shower• Floor-To-Ceiling Windows
Amenities	<ul style="list-style-type: none">• Illy Coffee Machine• Natura Bissé Bathroom Products• Pillow Menu• HD Smart TVs



Club Marina Bay Room

Boasting panoramic vistas of Marina Bay and Singapore's skyline through its floor-to-ceiling windows, this beautifully appointed room features a cool blue colour palette and includes exclusive lounge access.

View	Marina Bay View
Room Size (Sqm)	34
Max Occupants	3A or 2A + 1C
Sofa Bed <i>(Supplement applicable for 12 yrs old and above)</i>	✓
Balcony	✗
Balcony Size (Sqm)	-
With Lounge Access	✓
Connecting	✓
Connecting Room Option	<ul style="list-style-type: none">• Marina Bay View Room King / Twin• Marina Bay View Room King / King
Highlights	<ul style="list-style-type: none">• Custom-Designed Furniture• Bath & Rainforest Shower• Floor-To-Ceiling Windows
Amenities	<ul style="list-style-type: none">• M.O. Curators Service• HAUS 65 Access• Illy Coffee Machine• Natura Bissé Bathroom Products• Pillow Menu• HD Smart TVs



Family Suite

Suitable for short-term or long-term stays, this spacious one-bedroom suite features separate bedroom and living areas, an elegant bathroom with rain shower and luxurious bath as well as a kitchenette equipped with a fridge, microwave, washer and dryer

View	City View
Room Size (Sqm)	82
Max Occupants	4 (2A+2C / 3A+1C)
Sofa Bed <i>(Supplement applicable for 12 yrs old and above)</i>	✓
Balcony	×
Balcony Size (Sqm)	-
With Lounge Access	×
Connecting	×
Connecting Room Option	×
Highlights	<ul style="list-style-type: none">• Custom-Designed Furniture• Living Room• Bath & Rainforest Shower• Floor-To-Ceiling Windows• Kitchenette
Amenities	<ul style="list-style-type: none">• Illy Coffee Machine• HD Smart TVs



Family Theme Suite

Designed with a themed bunk bed and a host of amenities tailored for kids, this spacious family suite is the perfect choice for families with young children.

View	City View
Room Size (Sqm)	82
Max Occupants	2A 2C
Sofa Bed	×
Balcony	×
Balcony Size (Sqm)	-
With Lounge Access	×
Connecting	×
Connecting Room Option	×
Highlights	<ul style="list-style-type: none">• Kitchenette• Living Room• Bath & Rainforest Shower• Kids Bunk Bed• Floor-To-Ceiling Windows• Laundry Facilities
Amenities	<ul style="list-style-type: none">• Illy Coffee Machine• HD Smart TVs



Sea View Suite with Balcony

Soak up the soothing shades of the rising sun against the sea view from the comfort of this beautifully appointed suite, designed with a contemporary blend of Peranakan elements and luxurious touches of leather amenities. Highlights include a spacious walk-in closet, a private balcony, and an elegant bathroom with a rain shower and luxurious bath. Includes access to our exclusive lounge wherein you can enjoy a suite of privileges.

View	Sea View
Room Size (Sqm)	53
Max Occupants	4 (3A+1C or 2A 2C)
Sofa Bed <i>(Supplement applicable for 12 yrs old and above)</i>	✓
Balcony	✓
Balcony Size (Sqm)	3.2
With Lounge Access	✓
Connecting	✗
Connecting Room Option	✗
Highlights	<ul style="list-style-type: none">• Private Balcony• Bath & Rainforest Shower• Floor-To-Ceiling Windows
Amenities	<ul style="list-style-type: none">• HAUS 65 Access• Porsche Drive Experience• Pillow Menu• M.O. Curators Service• Natura Bissé Bathroom Products• Complimentary Minibar



Residential Suite with Balcony

Luxuriate in the warmth of your home away from home in this one-bedroom suite with a private balcony, separate bedroom and living area with a sofa bed. Fixtures include a bar counter, kitchenette with fridge, microwave, washer and dryer, and an elegant bathroom with a rain shower and bath.

View	City View
Room Size (Sqm)	100
Max Occupants	4 (2A+2C / 3A+1C)
Sofa Bed <i>(Supplement applicable for 12 yrs old and above)</i>	✓
Balcony	✓
Balcony Size (Sqm)	6.15
With Lounge Access	✗
Connecting	✗
Connecting Room Option	✗
Highlights	<ul style="list-style-type: none">• Private Balcony• Living Room• Dining Table for Five• Floor-To-Ceiling Windows• Kitchenette• Laundry Facilities
Amenities	<ul style="list-style-type: none">• Illy Coffee Machine• HD Smart TVs



Premier Suite

With views spanning over the cityscape, this spacious suite features a separate living area and bedroom and includes exclusive lounge access. Highlights of this spacious suite offers stunning vistas of the city skyline and includes access to a suite of privileges in our exclusive lounge.

View	City View
Room Size (Sqm)	95
Max Occupants	4 (3A+1C or 2A 2C)
Sofa Bed (Supplement applicable for 12 yrs old and above)	✓
Balcony	✓
Balcony Size (Sqm)	6.15
With Lounge Access	✓
Connecting	✗
Connecting Room Option	✗
Highlights	<ul style="list-style-type: none">• Dining Table for Four• Bath & Rainforest Shower• Guest Powder Room• Floor-To-Ceiling Windows
Amenities	<ul style="list-style-type: none">• M.O. Curators Service• HAUS 65 Access• Illy Coffee Machine• Natura Bissé Bathroom Products• HD Smart TVs• Sofa Bed



Marina Bay Suite with Balcony

With breathtaking views of the Marina Bay waterfront, this elegantly designed room features interior wall panels with hues of magenta accent. Highlights include a spacious bathroom with a rain shower and luxurious bath and access to our exclusive lounge with a host of privileges to enjoy.

View	Marina Bay View
Room Size (Sqm)	62
Max Occupants	4 (3A+1C or 2A 2C)
Sofa Bed <i>(Supplement applicable for 12 yrs old and above)</i>	✓
Balcony	✓
Balcony Size (Sqm)	3.2
With Lounge Access	✓
Connecting	✗
Connecting Room Option	✗
Highlights	<ul style="list-style-type: none">• Private Balcony• Sofa Bed• Custom-Designed Furniture• Bath & Rainforest Shower• Guest Powder Room
Amenities	<ul style="list-style-type: none">• M.O. Curators Service• HAUS 65 Access• Illy Coffee Machine• Natura Bissé Bathroom Products• Pillow Menu• HD Smart TVs• Complimentary Minibar



Premier Marina Bay Suite

With breathtaking views of the Marina Bay waterfront, this elegantly designed room features interior wall panels with hues of magenta accent. Highlights include a spacious bathroom with a rain shower and luxurious bath and access to our exclusive lounge with a host of privileges to enjoy.

View	Marina Bay View
Room Size (Sqm)	68
Max Occupants	4 (3A+1C or 2A 2C)
Sofa Bed <i>(Supplement applicable for 12 yrs old and above)</i>	✓
Balcony	✗
Balcony Size (Sqm)	-
With Lounge Access	✓
Connecting	✓
Connecting Room Option	<ul style="list-style-type: none">• Marina Bay Suite King + MBV Twin room• Marina Bay Suite King + MBV King room
Highlights	<ul style="list-style-type: none">• Sofa Bed• Custom-Designed Furniture• Bath & Rainforest Shower• Guest Powder Room
Amenities	<ul style="list-style-type: none">• M.O. Curators Service• HAUS 65 Access• Natura Bissé Bathroom Products• Pillow Menu• HD Smart TVs• Complimentary Minibar



Two-Bedroom Premier Suite

Boasting captivating views of the city skyline, experience luxury in this spacious two-bedroom suite equipped with an expansive living area, a luxurious bathroom featuring a rain shower and extended bath, and a walk-in wardrobe. Enjoy access to our exclusive lounge with a suite of privileges.

View	City View
Room Size (Sqm)	128
Max Occupants	7 (6A+1C or 5A 2C)
Sofa Bed <i>(Supplement applicable for 12 yrs old and above)</i>	✓
Balcony	✓
Balcony Size (Sqm)	6.15
With Lounge Access	✓
Connecting	✗
Connecting Room Option	✗
Highlights	<ul style="list-style-type: none">• Dining Table for Four• Bath & Rainforest Shower• Floor-To-Ceiling Windows• Guest Powder Room
Amenities	<ul style="list-style-type: none">• M.O. Curators Service• HAUS 65 Access• Illy Coffee Machine• Natura Bissé Bathroom Products• HD Smart TVs• Sofa Bed



Two Bedroom Residential Suite

Luxuriate in the warmth of your home away from home in our two-bedroom suite with a separate bedroom and living area with a sofa bed. Fixtures include a bar counter, kitchenette with fridge, microwave, washer, dryer, and an elegant bathroom with a rain shower and luxurious bath.

View	City View
Room Size (Sqm)	133
Max Occupants	6 (5A+1C)
Sofa Bed <i>(Supplement applicable for 12 yrs old and above)</i>	✓
Balcony	×
Balcony Size (Sqm)	-
With Lounge Access	×
Connecting	×
Connecting Room Option	×
Highlights	<ul style="list-style-type: none">• Private Balcony• Bath & Rainforest Shower• Kitchenette• Sofa Bed• Laundry Facilities
Amenities	<ul style="list-style-type: none">• Illy Coffee Machine• HD Smart TVs• Natura Bissé Bathroom Products



Two Bedroom Premier Marina Bay Suite

(1 King Bed & Twin or 2 King)

Complementing the captivating views of the Marina Bay with its magenta interior features, experience luxury in this elegantly appointed room equipped with plush carpet flooring, a luxurious bathroom featuring a rain shower and extended bath, and access to our exclusive lounge with a suite of privileges to enjoy.

View	Marina Bay View
Room Size (Sqm)	96
Max Occupants	7 (6A+1C)
Sofa Bed <i>(Supplement applicable for 12 yrs old and above)</i>	✓
Balcony	✗
Balcony Size (Sqm)	-
With Lounge Access	✓
Connecting	✗
Connecting Room Option	✗
Highlights	<ul style="list-style-type: none">• Custom-Designed Furniture• Bath & Rainforest Shower• Floor-To-Ceiling Windows• Sofa Bed• Guest Powder Room
Amenities	<ul style="list-style-type: none">• M.O. Curators Service• HAUS 65 Access• Natura Bissé Bathroom Products• Pillow Menu• HD Smart TVs• Complimentary Minibar



Three Bedroom Residential Suite with Balcony

Exuding warmth and comfort of a home, this three-bedroom suite is designed with a large living space, a private balcony, and a fully equipped kitchen with a fridge, microwave, dishwasher, washer, and dryer, as well as a spacious bathroom with a rain shower and luxurious bath.

View	City View
Room Size (Sqm)	204
Max Occupants	8 (7A+1C)
Sofa Bed <i>(Supplement applicable for 12 yrs old and above)</i>	✓
Balcony	✓
Balcony Size (Sqm)	6.15
With Lounge Access	✗
Connecting	✗
Connecting Room Option	✗
Highlights	<ul style="list-style-type: none">• Private Balcony• Bath & Rainforest Shower• Living Room• Dining Room for Eight• Kitchenette• Laundry Facilities
Amenities	<ul style="list-style-type: none">• Illy Coffee Machine• HD Smart TVs• Natura Bissé Bathroom Products



Four Bedroom Residential Suite with Balcony

Combining luxurious home living and bespoke amenities, retreat into the pristine comfort of this appointed four-bedroom suite. Highlights include a spacious living room with a sofa bed, a private balcony, a fully equipped kitchen with a fridge, microwave, dishwasher, washer, and dryer, and a luxurious bathroom with a separate walk-in rain shower and stand-alone bath.

View	City View
Room Size (Sqm)	301
Max Occupants	12 (10A+2C)
Sofa Bed <i>(Supplement applicable for 12 yrs old and above)</i>	✓
Balcony	✓
Balcony Size (Sqm)	6.15
With Lounge Access	✗
Connecting	✗
Connecting Room Option	✗
Highlights	<ul style="list-style-type: none">• Private Balcony• Living Room• Dining Room for Eight• Bath & Rainforest Shower• Kitchenette• Laundry Facilities
Amenities	<ul style="list-style-type: none">• Illy Coffee Machine• HD Smart TVs• Natura Bissé Bathroom Products



Presidential Suite

Experience elegant luxury as you enter our Presidential Suite, the luxurious space is designed with ample living space overlooking stunning views of the Marina Bay and Sea Views

View	Marina Bay & Sea Views
Room Size (Sqm)	178
Max Occupants	2
Sofa Bed	×
Balcony	✓
Balcony Size (Sqm)	13.07
With Lounge Access	✓
Connecting	✓
Connecting Room Option	<ul style="list-style-type: none"> • Presidential Suite / Marina Bay View Room King / Marina Bay View Room King or Twin
Highlights	<ul style="list-style-type: none"> • Private Balcony • Custom-Designed Furniture • Living Room • Dining Room for Eight • Kitchen • Hot Tub
Amenities	<ul style="list-style-type: none"> • M.O. Curators Service • HAUS 65 Access • Natura Bissé Bathroom Products • Pillow Menu • HD Smart TVs • Complimentary Minibar



Presidential Suite



Three Bedroom Presidential Suite

(1 Super King Bed & 2 King or 1 King & Twin)

Experience refined luxury in this opulent Presidential Suite, designed with ample living space overlooking stunning views of the Marina Bay, a spacious bedroom with a super king size bed, and a large dining room.

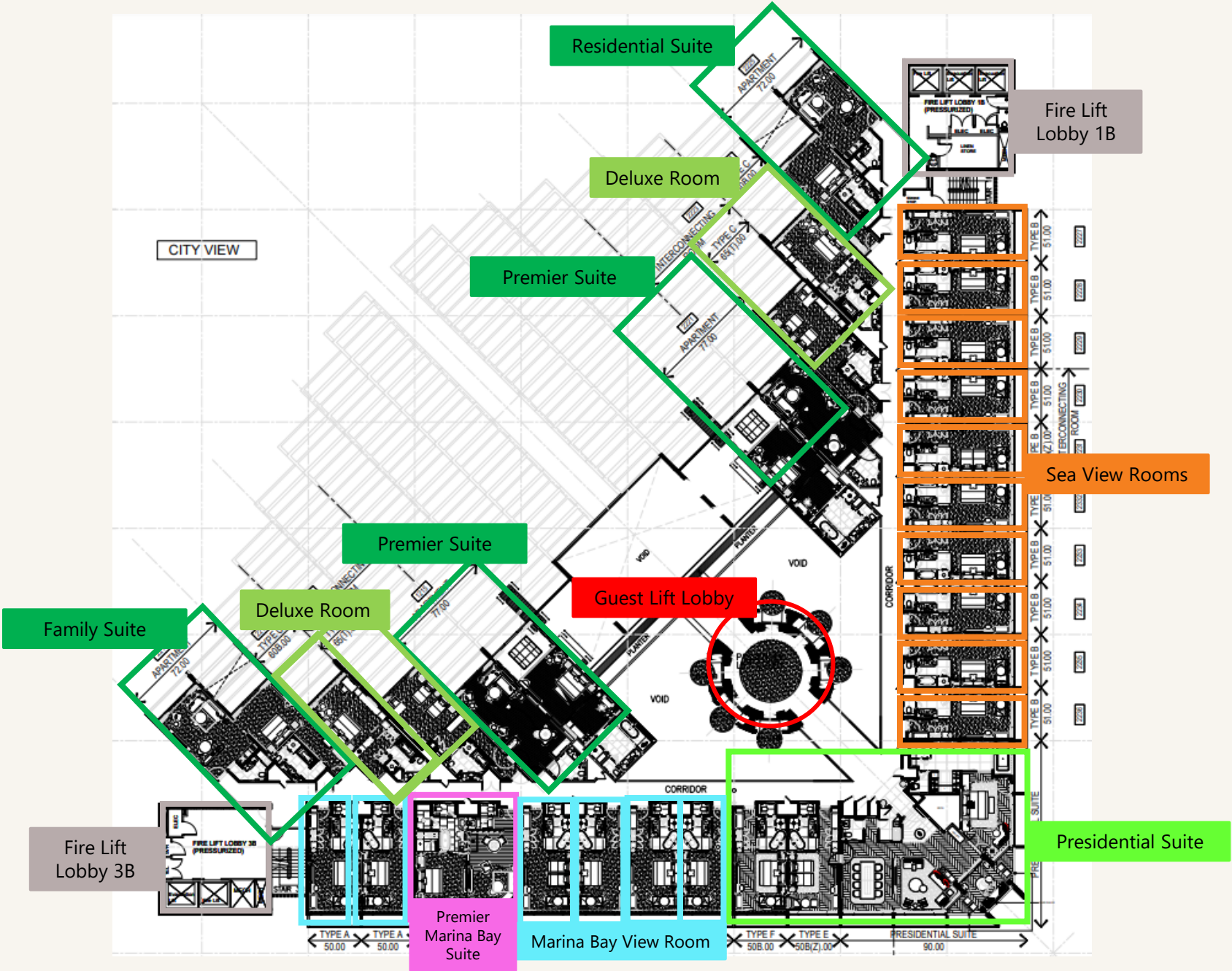
View	Marina Bay & Sea Views
Room Size (Sqm)	246
Max Occupants	7
Sofa Bed	×
Balcony	✓
Balcony Size (Sqm)	13.07
With Lounge Access	✓
Connecting	×
Connecting Room Option	×
Highlights	<ul style="list-style-type: none">• Private Balcony• Custom-Designed Furniture• Living Room• Dining Room for Eight• Kitchen• Hot Tub
Amenities	<ul style="list-style-type: none">• M.O. Curators Service• HAUS 65 Access• Natura Bissé Bathroom Products• Pillow Menu• HD Smart TVs• Complimentary Minibar



Three Bedroom Presidential Suite



Level 22



Royal Marina Bay Penthouse

(1 Super King Bed & 3 King or 2 King & Twin)

Experience the epitome of luxury in our elegantly designed four-bedroom Royal Marina Bay Penthouse, perched high on our uppermost floor with panoramic vistas of Marina Bay and Singapore's skyline.

View	Marina Bay & Sea Views
Room Size (Sqm)	393
Max Occupants	10
Sofa Bed	×
Balcony	✓
Balcony Size (Sqm)	13.07
With Lounge Access	✓
Connecting	×
Connecting Room Option	×

Highlights	<ul style="list-style-type: none"> •Panoramic View Marina Bay & Sea Views •Room Size Approx 393 SQM / 4230 SQF Sqft •1 Super King Bed + 3 King Bed or 2 Twin Bed & 2 King Bed 	<ul style="list-style-type: none"> •In Room Check In •Lounge Access to HAUS 65 •Private Balcony with Marina Bay Views •Large Living Area •Custom-designed Furnitures •Dining Room for Ten
Amenities	<ul style="list-style-type: none"> •Illy Coffee Machine •Soehnle Bathroom Scale •Dyson Hair Dryer & Straightener •MOFitWellness Classes •Pillow Menu 	<ul style="list-style-type: none"> •Dry Cleaning Service •Shoe ShineService •Daily Food & Beverage Turndown •Devialet Sound System •M.O Curators Service •Pillow Menu •HAUS 65 Access •Natura Bissé Bathroom Products •HD Smart TVs



Four Bedroom Royal Marina Bay Penthouse

(1 Super King Bed & 3 King or 2 King & Twin)

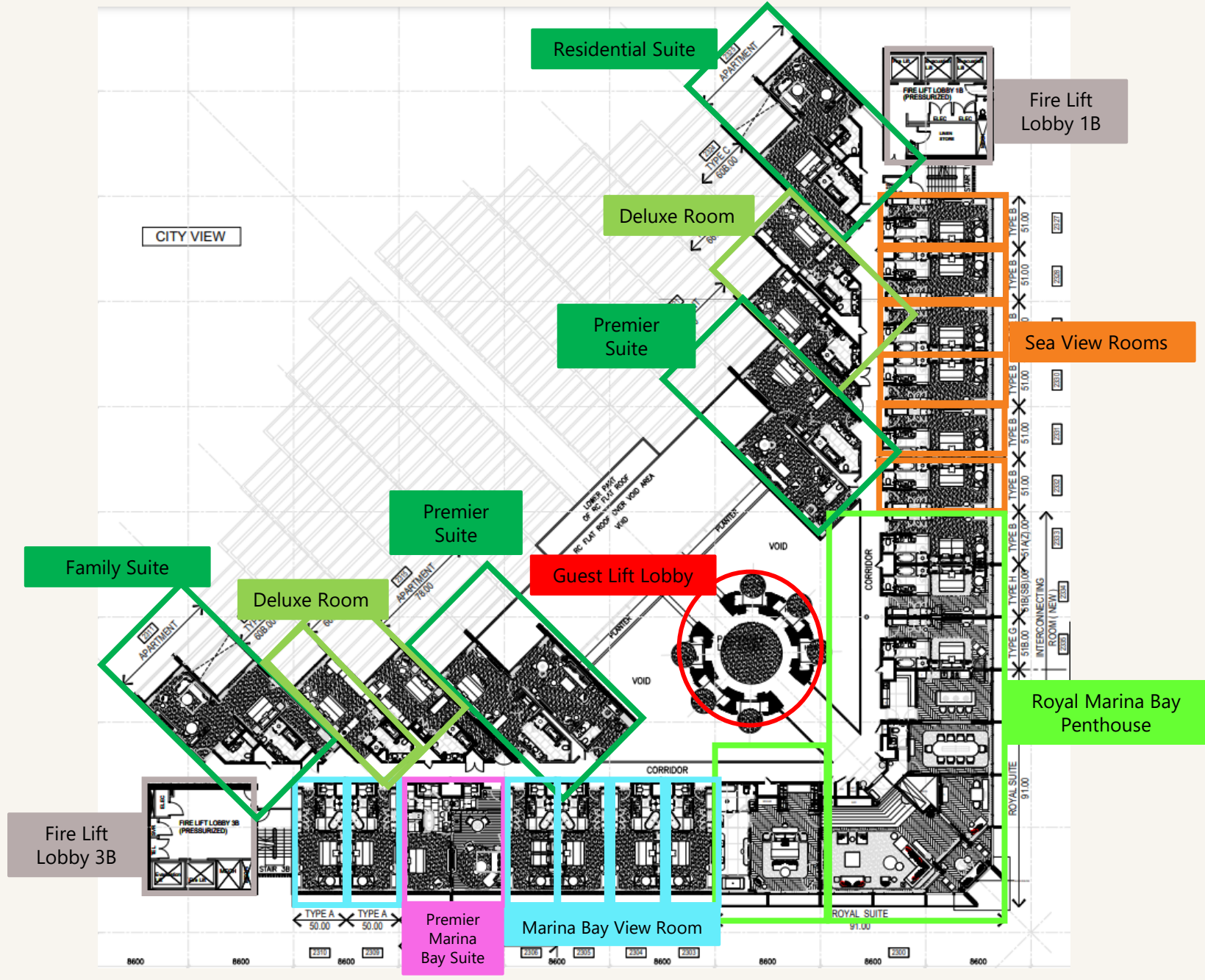


Four Bedroom Royal Marina Bay Penthouse

(1 Super King Bed & 3 King or 2 King & Twin)



Level 23





MANDARIN ORIENTAL, SINGAPORE

HAUS 65

Club access is entitled to guests staying in room category of **Club Marina Bay Room** and above.

- **Benefits includes:**

- Champagne breakfast from 6:30am to 10:30am
- Delectable afternoon tea from 2:00pm to 4:00pm
- Evening cocktails with hors d'oeuvres from 5:00pm to 7:00pm
- Selection of premium champagne, wines, spirits and beers, available throughout the day until 7:00pm
- Free flow of soft drinks, juices, coffee and tea all day
- Complimentary beverages from minibar throughout the stay
- Garment laundry and pressing for up to two pieces per day (non-accumulative)
- Personalize your stay with unique experiences curated by our MO Curators. From seamless assistance to unveiling hidden gems, our MO Curators provide unrivaled service and guide you through an immersive journey to discover Singapore during your stay.
- Access to MOFIT Wellness classes
- Complimentary chauffeur driven HAUS 65 Car.*
- The HAUS 65 Car is available from Monday to Friday, (excluding weekends & public holidays), from 10am to 5:30pm. Guests will be accommodated on a first-come-first-serve basis and no prior reservation will be accepted. This service is a one-way drop off, within 2km radius from the hotel.

*Inclusions might be subjected to changes.

**In the interest and comfort of guests at the lounge, we request your cooperation to adhere to a smart casual dress code. Kindly be advised that the lounge is reserved for guests above the age of 12 only and prevailing charges apply for invited guests.



embu Kids Corner

Introducing our jungle-themed kids' buffet corner brimming with delightful snacks and desserts crafted for our littlest guests.

What's more, our Little Fans 6 years old and under get to enjoy complimentary lunch and dinner buffets during their stay, making it an ideal choice for family-oriented getaways.

embu's Kids Corner is available during dinner on weekdays, and during brunch & dinner on weekends.



Dining



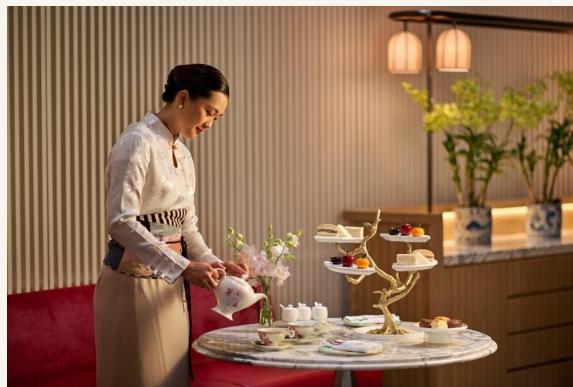
Cakes and Pastries

The Mandarin Cake Shop

A vibrant pastry boutique serving artisanal confectionaries with decadent flavours.

Hours

8am – 7pm



Afternoon Tea & More

Lobby Lounge

Indulge in the timeless charm of afternoon tea and savour delectable moments with loved ones

Afternoon Tea

1 - 5pm



International Buffet

Embu

An all-day dining experience with local and international flavours.

Breakfast

6:30 – 10:30am

Lunch

12 – 2:30pm (Monday - Friday)

Brunch

12 - 3pm (Saturday - Sunday)

Dinner

6:30 – 10pm



Dining



Bar Snacks & Cocktails

BAY@5

Alfresco lounge with panoramic Marina Bay view.

Hours
6 – 11pm



Cocktails & Bar Snacks

MO BAR

Curated cocktails with views of the city skyline.

Hours
5pm – 1am (Sunday - Thursday)
5pm – 2am (Friday - Saturday)



Cantonese

Cherry Garden

Take a journey into the Orient.

Lunch
12 – 2:30pm

Dinner
6:30 – 10:30pm

Brunch
11am – 1pm (Saturday - Sunday)
11am – 1pm (Public Holiday)
1:30 – 3:30pm (Saturday - Sunday)
1:30 – 3:30pm (Public Holiday)



Italian Specialties

Dolce Vita

Authentic Italian cuisine with a delicious contemporary touch.

Lunch
12 – 2:30pm

Dinner
6:30 – 10:30pm

Brunch
12 – 3pm (Saturday)



Dining



Japanese

Zuicho

An immersive and interactive Japanese fine dining culinary experience.

Lunch

12pm onwards

Dinner

6pm onwards



American Steakhouse

Morton's The Steakhouse

The classic American steakhouse experience in the heart of Singapore.

Lunch

12 - 3pm (Sunday)

Dinner

5:30 - 10pm (Monday - Thursday)

5:30 - 11pm (Friday - Saturday)

5 - 9pm (Sunday)



Bar Snacks & Cocktails

The Bar at Morton's

The Bar at Morton's is a popular destination with local bar-goers and travelers, becoming an institution on the local bar scene over the years.

Bar

5 - 11pm (Monday - Saturday)

5 - 9pm (Sunday)



Spa & Fitness



Swimming Pool

Hours
7am - 10pm



Spa

With a tranquil setting, talented therapists and excellent treatments, our spa is a uniquely relaxing retreat

Hours
9:30am - 9pm

Heritage of the Orient
Monday – Thursday SGD 340
Friday – Sunday SGD 370

Express Manicure/Pedicure
Monday – Thursday SGD 180
Friday – Sunday SGD 2220



Fitness Centre

Hours
24 Hours



Exceptionally Singapore Experiences



Circuit Sidecar Adventure

Take a thrilling 30-minute vintage Vespa sidecar ride along a specially designed route. Zoom through the Marina Bay Street track, passing unique Singapore landmarks like the F1 Pit Building. Pause for a photo at Anderson Bridge and catch a glimpse of the iconic Merlion.



Heritage River Cruise

Hop on a bumboat of yesteryear and cruise down memory lane along Clarke Quay, Boat Quay and Marina Bay. This 40-minute experience welcomes you to discover the stories of Singapore's bustling trading ports whilst basking in the sights and sounds of the city.



National Museum

Discover the Singapore story and take a journey into Singapore's past with a visit to the National Museum of Singapore, the nation's oldest museum housed within the 19th century colonial exterior. Experience an immersive journey and discover Singapore's development over more than 700 years through the various galleries and exhibitions.



Singapore Flyer

Hop on the Singapore Flyer, the largest observation wheel in Asia standing at 165 meters above ground, and marvel at the breathtaking views of Marina Bay and the city's skyline. Up the ante of your experience with an immersive adventure at the Time Capsule and enjoy a thrilling discovery of Singapore's past, present and future.



Gardens by the Bay

Explore the whimsical world of floral and fauna at Gardens by the Bay, featuring three distinctive waterfront gardens. Admire the seasonal floral displays at the Flower Dome, a space that holds the Guinness World Record for the largest glass greenhouse. Or take a fascinating trip to the Cloud Forest, home to one of the world's tallest indoor waterfalls, and discover the range of exotic plant species.



Function Spaces

As Singapore's most sophisticated setting, we are renowned for service, efficiency and the ability to host high-profile meetings and events for both local businesses and international companies.



Function Room	Size (Sq ft)	Size (Sq m)	Height (ft)	Conference & Meeting	Dinner Banquet	Cocktail Reception
LOBBY LEVEL						
The Oriental Ballroom*	6,447	599	13	420	390	500
Atrium Suites**	2,990	278	13	240	180	200
Atrium Suite 1	1,151	107	13	72	50	70
Atrium Suite 2	914	85	13	60	40	50
Atrium Suite 3	925	86	13	60	40	50
Atrium Suite 4 & 5	948	88	13	60	40	50
LEVEL THREE						
Boardroom 1	689	64	9	50	20	30
Boardroom 2	753	70	9	50	20	30
Boardroom 3	603	56	9	40	20	20
LEVEL FIVE						
Garden Suite	3,907	363	9	150	130	150
Harbour View Suite 1	700	65	10	Table for 15	-	-
Harbour View Suite 2	452	42	10	Table for 12	-	-
Harbour View Suite 3	829	77	10	50	40	50
Harbour View Suite 4	829	77	10	50	40	50
Harbour View Suite 5	829	77	10	50	40	50
Harbour Terrace	6,594	613	-	-	200	250
Private Cabana	828	77	-	-	30	60
BAY@5	1,119	104	-	-	-	50



Oriental Ballroom

Shaped gracefully as a fan, the Oriental Ballroom is equipped with a 20-metre curved LED screen, boasting high resolution, to create an immersive atmosphere that's perfect for a range of events, from weddings to corporate functions and more. Its expansive visibility ensures guests enjoy a clear view, enhancing their overall experience when hosting special occasions with us.

Exuding warmth and grandeur in an understated manner, the 600sqm space adorned with luxurious fixtures can accommodate up to 400 guests.



Atrium Suites

Located on the lobby level, our Atrium Suites can host gatherings of up to 200 guests. Its top-notch audiovisual facilities include the latest LED screen installation, flexible meeting areas, and high-speed internet access.





MANDARIN ORIENTAL
SINGAPORE

EXCEPTIONALLY SINGAPORE