

PROVOCATEURS WELCOME

**DREAMERS.
CHANGE AGENTS.
DISRUPTORS.
THE AVANT-GARDE.
REVOLUTIONARIES.
MAVERICKS.
WILD AT HEART.
THE UNRESTRAINED.
THE UNSWERVING.
ACTION-TAKERS.
THE MAKERS.
AND THE DOERS.**

MONDRIAN
SINGAPORE DUXTON

**WELCOME TO SINGAPORE'S LATEST OFFERING.
THE LIGHT ON THE HILL. THE NEW PLACE TO BE.
HERE'S TO THE CRAZY ONES. REBELS' REBEL.
THE DIFFERENT DRUMMERS.
THE GUERRILLAS IN OUR MIDST.**

MONDRIAN SINGAPORE DUXTON.

PROVOCATEURS WELCOME

OUR IDENTITY

MONDRIAN

More than just a hotel, Mondrian represents a way of travel. An exclusive selection of design-forward properties in some of the world's most iconic destinations. A sculptural wonderland, imbued with the aesthetic sensibilities of design visionaries like Philippe Starck, Marcel Wanders, and Robbyn Carter. A place to meet, and a place to retreat for both locals and travelers alike. Mondrian serves up innovation and creativity, with a progressive, forward-thinking approach inspired by the world's most compelling cultural scenes.

ENNISMORE

Mondrian is part of Ennismore, a creative hospitality company with a global portfolio of entrepreneurial and founder-built brands rooted in culture and community. Established in 2021 as a joint venture with Accor, Ennismore is the world's largest and fastest-growing hospitality company, curating and managing unique properties and experiences in some of the most exciting destinations around the world, including Los Angeles, Miami, New York, London, Doha, Seoul, the Caribbean, Barcelona, Istanbul, and beyond.

THE LIGHT ON THE HILL.



A breaker of boundaries, the hotel is ideally placed between the mavericks of Chinatown and the makers of the CBD. Today, Duxton Hill is Singapore's most up-and-coming neighbourhood, featuring barista cafes, world-class eateries and bars, art galleries and independent boutiques. Now Mondrian arrives at the top of that hill.

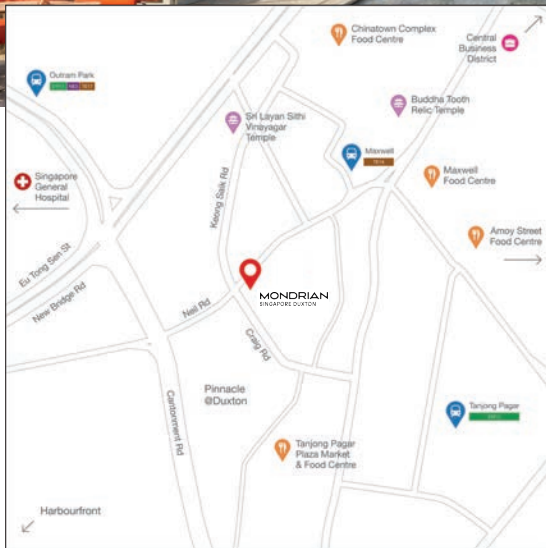


With its flair for the unexpected, bold design and electric energy, Mondrian will offer guests a revolutionary experience of the Lion City.

“I want Mondrian to be the beating heart of this extraordinary city, a catalyst to forge connections with like-minded people, innovators and the wild at heart.”

*Robert C. Hauck, General Manager of Mondrian
Singapore Duxton*

**FOR THE
WILD AT
HEART**



- Within 1km radius to 14 Michelin star restaurants
- In close proximity to over 20 award-winning cocktail destinations
- Surrounded by 4 of Singapore's most fabled food centres, including Maxwell, Amoy and more
- Steps away from 3 MRT stations and 3 distinct transport lines
- Adjacent to key business and shopping areas including the CBD and Chinatown

AMONG THE CHANGEMAKERS

EPICURES

L3

JUNGLE
BALLROOM

ROOFTOP

*Canyon
Club.*

MAIN HOTEL TOWER

L3

BOTTEGA
DI
carna

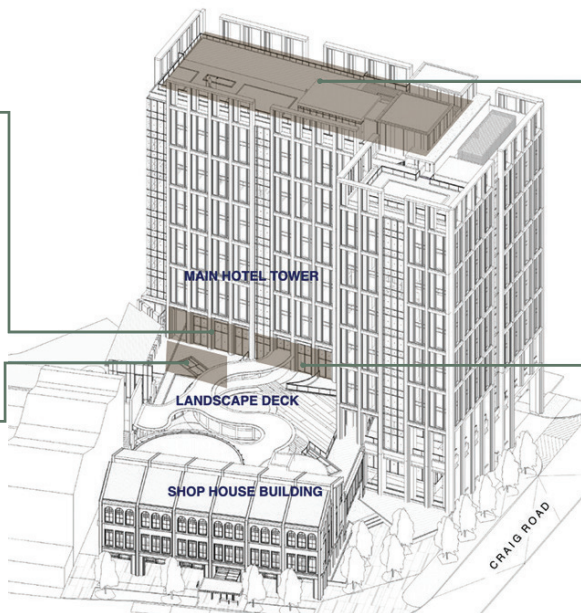
L1

Christina's
Duxton Hill

LANDSCAPE DECK

SHOP HOUSE BUILDING

CRAIG ROAD



WELCOME



MODERN ITALIAN EATERY BY DARIO CECCHINI

CAPACITY: 122

Presenting Bottega di Carna, a vibrant modern Italian eatery by Dario Cecchini, also known as “The Greatest Butcher in the World”. Expect a playful gastronomic experience and Italian classics with elements of Dario’s rebellious spirit.



WELCOME TO THE JUNGLE

CAPACITY: 70

Celebrating the ultra-vibrancy and wild nature of Southeast Asia, Jungle Ballroom is a tropical cocktail bar rooted in the region’s rich bounty that pulses with decadent mystique and sultry glamour.



ALL DAY SPOT FOR COCKTAILS, NATURAL WINE AND COFFEE

CAPACITY: 45

Made with love and conscious partnerships, Christina’s offers a refuge from the hustle and bustle of the city by day with its selection of products made by local artisans. By night, the space transforms into a devoted wine and cocktail haven.



ROOFTOP BAR AND POOLSIDE CABANAS

INDOOR SEATING CAPACITY: 21

OUTDOOR POOL CAPACITY: 62

Reach the top floor and find yourself instantly transported to the glitz and glamour of 1970’s Hollywood, surrounded by the sweeping views of the glittering Singapore skyline.

PINNACLE CORNER ROOM



| ROOM SIZE (SQM) | ROOM TYPE | NO. OF ROOMS |
|-----------------|-----------------|--------------|
| 22 | Duxton Room | 105 |
| 22 | Duxton View | 80 |
| 22 | Duxton Corner | 16 |
| 22 | Pinnacle Room | 84 |
| 22 | Pinnacle Corner | 7 |
| 45.5 | Pinnacle Suite | 4 |
| 70 | Mondrian Suite | 1 |

DREAMERS

WELCOME.

Mondrian Singapore Duxton's 302 rooms and suites were designed by the award-winning Studio Carter. They take inspiration from the pre-war architecture of Duxton Hill and traditional Singaporean culture.

Each room is especially designed for comfort and relaxation with minibars, coffee machines and amenities by challengers to the game, MALIN+GOMEZ.

PINNACLE SUITE



MONDRIAN SHOPHOUSE SUITE



Situated on top of a row of reimagined shophouses, the Shophouse Suites series set the scene with a distinctive style. Inspired by the traditional Singaporean architecture and executed with contemporary flair, the shuttered facade bathes the space in floor-to-ceiling light and offers a view of one of Singapore's liveliest streets. Privately accessed by the hotel gardens, the suites are designed to adapt to the tastemakers' lifestyle, transforming from stays to parties, meetings and more.

SHOPHOUSE SUITE



| ROOM SIZE (SQM) | ROOM TYPE | NO. OF ROOMS | MAXIMUM EVENT CAPACITY |
|-----------------|--------------------------|--------------|------------------------|
| 50 | Shophouse Suite | 3 | 25 |
| 50 | Gallery Shophouse Suite | 1 | 25 |
| 128 | Mondrian Shophouse Suite | 1 | 50 |

ART- FORWARD COOL



Credit: Dawn Ng and Sullivan+Strumpf

Waterfall IV (2020) by Dawn Ng

4k video

Location: lobby lift



Credit: Ian Davenport and Waddington Custot

Deep Magenta, Mirrored (2020) by Ian Davenport

Acrylic on aluminium

Location: reception desk

From photography to installations, augmented reality to film, Mondrian Singapore Duxton's collection integrates art and design with the philosophies of architecture. Each artwork is specifically curated to evoke a sense of space for the guest.

Highlights from local mavericks and international pioneers of the avant-garde transform the hotel into a canvas of creativity.

HOTEL AS A CANVAS



Rojak (2021) by André Wee
Print on wood
Location: hotel rooms

The international placements of each artwork across the hotel's dynamic space makes for a storied viewing experience as guests journey through the property, with elements of discovery and surprise at every turn.



Credit: @tylershields @igfineart

Ferrari Legs (2022) by Tyler Shields
Chromogenic print on paper
Location: Rooftop



Credit: Mondrian Singapore Duxton

Crystallised (2022) by SOFTlab
Aluminium structure clad in iridescent acrylic
Location: Christina's



Credit: @kaws

WHAT PARTY (2020) by KAWS

Bronze

Location: Entrance, street level

The first permanent street-level display on public view in Asia, WHAT PARTY, is positioned at the entrance to Mondrian on the corner of Neil and Craig Road. The significant piece is representative of the eclecticism of the Duxton Street culture, standing side by side with heritage Singaporean shophouses while looking to the future with the hotel's 360-degree views of the CBD skyline.

MONDRIAN
SINGAPORE DUXTON

16A Duxton Hill Singapore 089970 | +65 6019 8888 | enquiry.sg@mondrianhotels.com